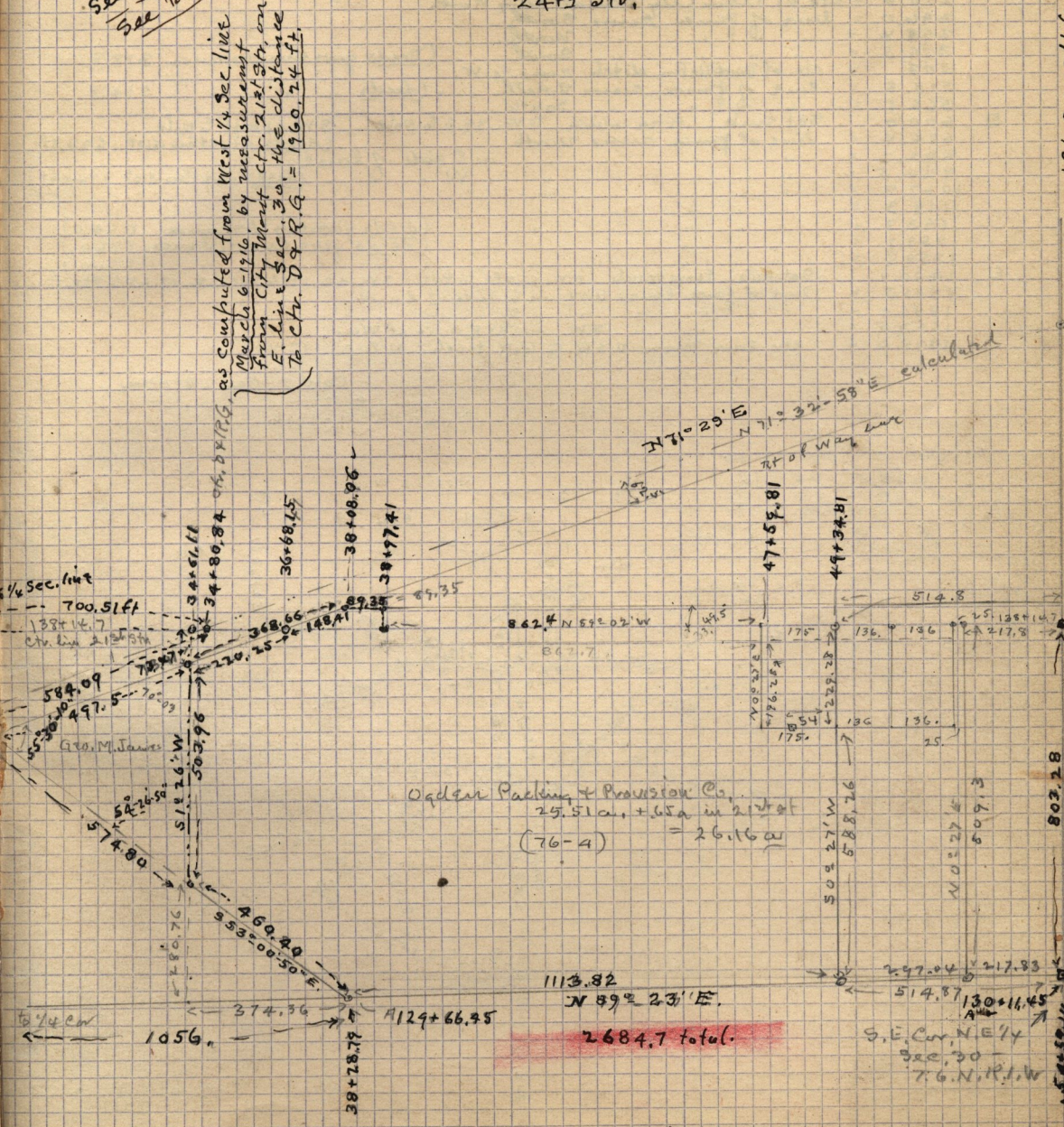


Survey for Ogden Packing & Provision Co. in N.E. 1/4 Sec. 30 T.P. 6. N. R. 1. W

See Plat Book p. 71
" Field " J.P. 72
See Page 69 - this book
See Book D - p. 34-35

The sketch hereon was made from Computations - - - East from 24+5 Str.

as computed from West 1/4 Sec. line
March 6-1916, by measurement
from City Magnet ctr. 21st Str. on
E. line of Sec. 30. The distance
to ctr. D & R. G. = 1960.74 ft.



at Sta 54+49.61 for Sec. line Meet.
Note: Feb. 25, 1916 - Leutz sat Mon. 2-7-17-2-29 ft too far West of Sec. line
54+54.9 ✓
B
54+57.14 B = 54+56.85
N 0° 27' E